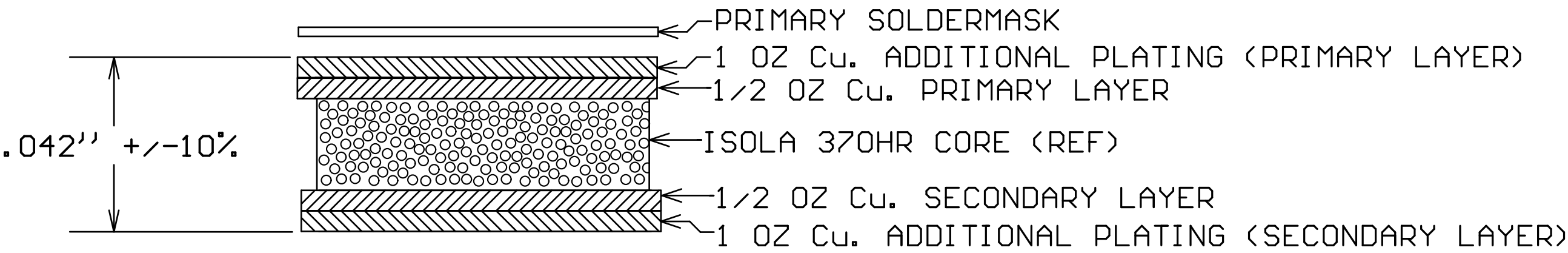
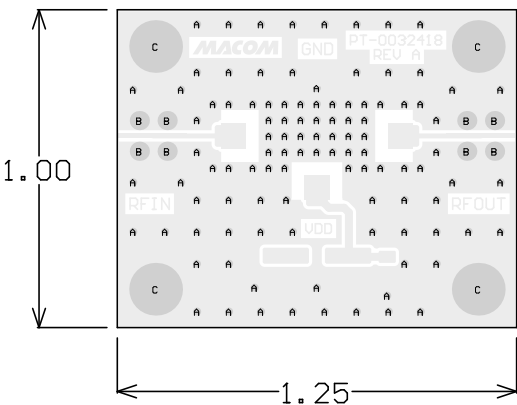


BOARD DIELECTRIC / COPPER STACKUP
FINISHED BOARD THICKNESS
(EXCLUDING SOLDERMASK)



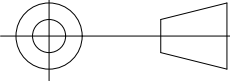
DETAIL 'A'

Symbol	Count	FHS	Tolerance	Plated	Hole Type
A	105	12.00mil	+3/-12mil	PTH	Round
B	8	45.00mil	+/-3mil	PTH	Round
C	4	100.00mil	+/-3mil	PTH	Round
	117 Total				



- NOTES:
- MATERIAL:
DIELETRIC: ISOLA 370HR CORE.
STARTING COPPER FOIL ON PRIMARY AND SECONDARY LAYERS SHALL BE 1/2 OZ.
COPPER ON PRIMARY AND SECONDARY SHALL BE PLATED UP AN ADDITIONAL 1 OZ.
MATERIAL STACKUP, THICKNESS, AND STARTING COPPER FOIL PER DETAIL 'A'.
 - FINISH: PRIMARY AND SECONDARY SIDE FINISH;
ELECTROLESS NICKEL/IMMERSION GOLD (ENIG) PER IPC-4552.
ELECTROLESS NICKEL: 118-236 MICRO-INCHES
IMMERSION GOLD: 2-8 MICRO-INCHES
THERE SHALL BE NO PITS, PIN HOLES, SCRATCHES OR NODULES WITHIN EXPOSED METAL AREAS
STACKUP REPRESENTS FINISHED THICKNESS.
 - PCB SHALL BE BUILT PER IPC-6012 CLASS 2 AND CONFORM TO IPC-A-600 CLASS 2 LATEST REVISIONS.
 - ALL HOLES TO BE PLATED THRU UNLESS OTHERWISE SPECIFIED.
 - LINE WIDTH AND SPACING SHALL BE +/-1 MIL.
 - ELECTRONIC DATA IS EQUAL TO THE FINISHED LINE WIDTH.
 - ALL FINISHED HOLE SIZES APPLY AFTER PLATING.
 - COPPER PLATING IN THROUGH HOLES WILL BE .001" MINIMUM AVERAGE WITH AN ABSOLUTE MINIMUM OF .0007".
 - DIMENSIONS SHOWN ARE FOR LOCATION OF O,O FOR THE DRILL FILE.
 - ALL 12 MIL FHS SHALL BE FILLED WITH NON-CONDUCTIVE VIA FILL MATERIAL, CAPPED OVER, FINAL PLATING AND PLANARIZED FLAT.
 - LPI SOLDERMASK COATING SHALL CONFORM TO IPC-SM-840 CLASS T. COLOR GREEN. SMOBC. PRIMARY SIDE ONLY.
 - NO SILKSCREEN ON PCB.
 - ALL MATERIALS DESCRIBED IN THIS DOCUMENT/DRAWING SHALL BE IN COMPLIANCE WITH AND CONTAIN NO SUBSTANCES RESTRICTED OR REQUIRING SPECIAL RECLAMATION UNDER THE LATEST RoHS, WEEE OR ELV DIRECTIVES.

X	MAAL-011228
NEXT ASSY	USED ON
APPLICATION	

<div>UNLESS OTHERWISE SPECIFIED INTERPRET DRAWING PER ASME Y14.5 DO NOT SCALE THIS DRAWING</div> <div>NOTE: THIS DRW INCORPORATES THIRD ANGLE PROJECTION</div> <div></div> <div>MACOM Technology Solutions CONFIDENTIAL INFORMATION SUBJECT TO NDA</div> <div><div>The information contained in this document or material is the valuable and confidential property of MACOM Technology Solutions Holdings, Inc. and/or its subsidiaries or affiliates (collectively MACOM), provided to you subject to a non-disclosure agreement between you and MACOM solely for use in supporting MACOM's business as and to the extent MACOM authorizes in writing from time to time. This information shall be held in strictest confidence and shall not be reproduced, published, disclosed to others, or used for any purpose except as and to the extent specifically authorized by MACOM in a separate written agreement. If permission is granted for reproduction, this legend must be included in any and all copies. This document or material shall be promptly returned to MACOM or destroyed upon request, completion of the use for which it was made available to recipient, or termination of MACOM's relationship with recipient, whichever first occurs.</div></div>	<div>UNLESS OTHERWISE SPECIFIED DIMENSIONS ARE IN INCHES</div>		<div>MACOM</div> <div>WWW.MACOM.COM</div>		
	TOLERANCES ON		TITLE MAAL-011228 EVAL BOARD		
	DECIMALS	ANGLES			
<div>.X ± .1 .XX ± .02 .XXX ± .005 .XXXX ± .0005</div>	± 0.5				
UNLESS OTHERWISE SPECIFIED 63 ALL OVER		SIZE	DRAWING NO.	REVISION	
MATERIAL SEE NOTE 1		B	PT-0032418	A	
FINISH SEE NOTE 2	SCALE: 1:1		PACKAGE TYPE: X	SHEET 1 OF 1	